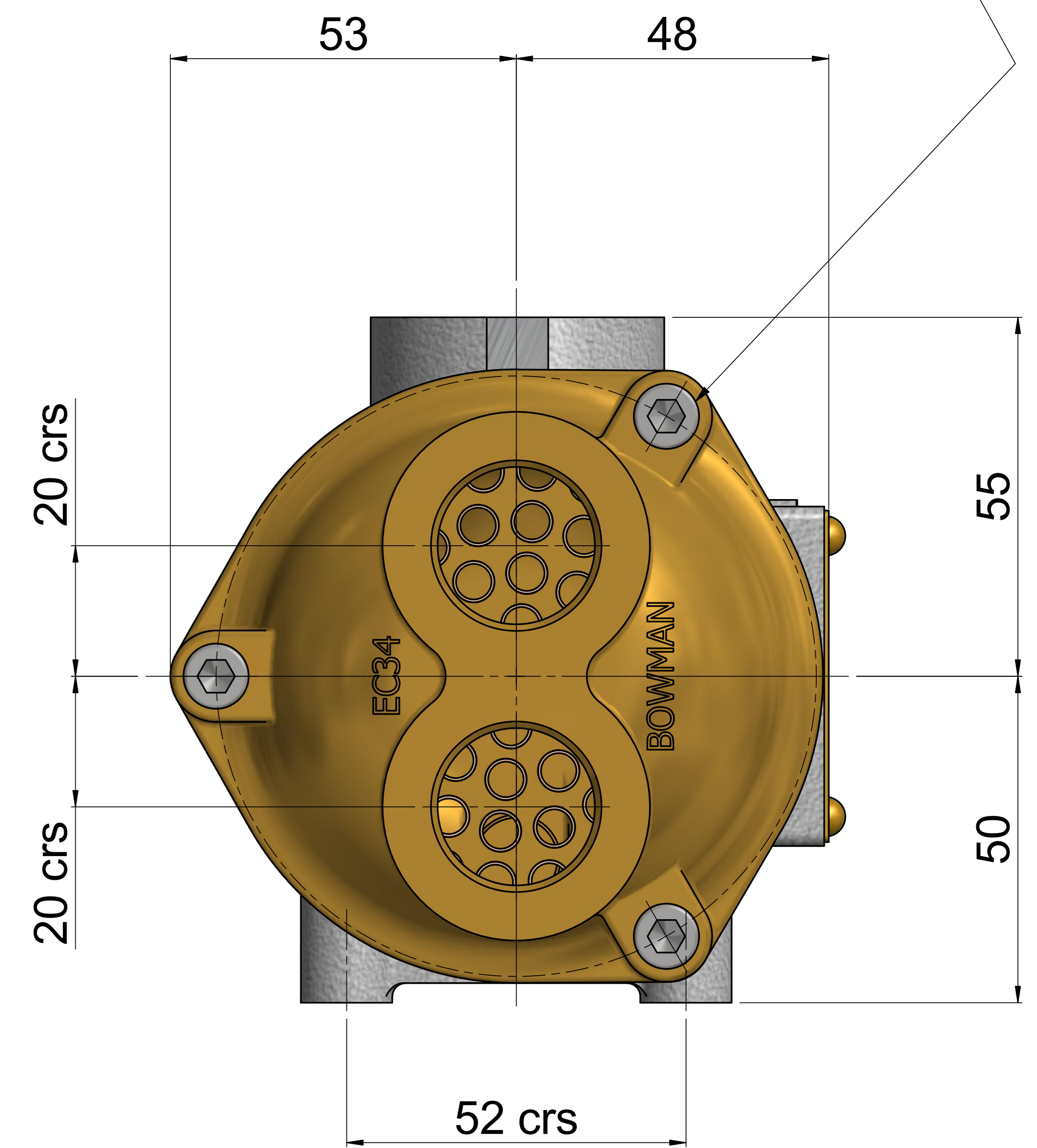


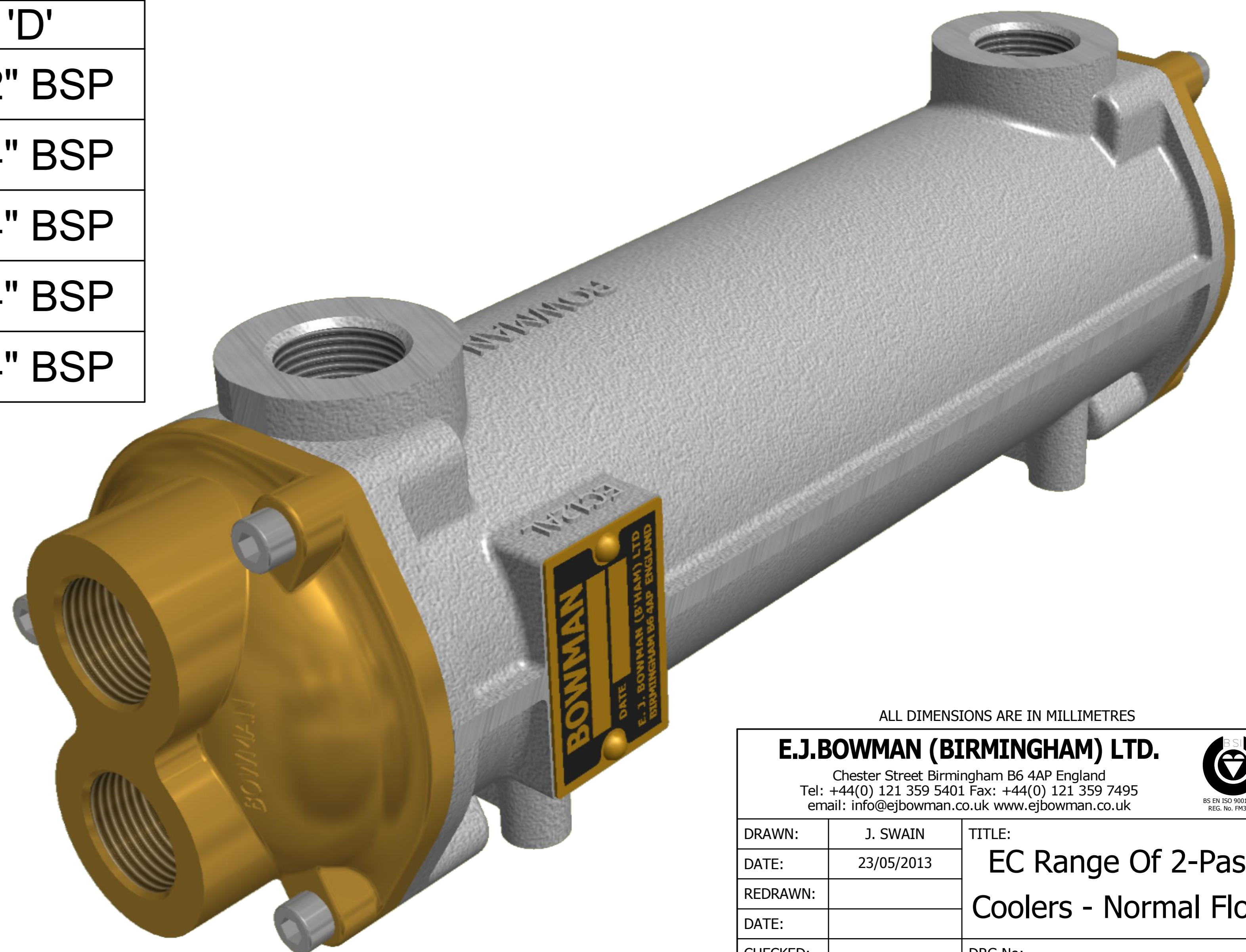
6 ~ Socket Screws M6 x 30  
Removal Of These Will Enable The  
End Covers And Tube Stack To Be Removed



TYPE No	'A'	'B'	'C'	'D'
EC80	178	60	60	1/2" BSP
EC100	258	140	104	3/4" BSP
EC120	344	226	190	3/4" BSP
EC140	442	324	288	3/4" BSP
EC160	570	452	416	3/4" BSP

Part No.	Drg No.	Qty	Description	Item	Material
3594	3594	1	NAME PLATE	8	BRASS
915B	915	1	DRAIN PLUG - 1/4" BSP	7	BRASS
HS06X30	-	6	SOCKET SCREWS - M6 x 30	6	MS
EC034-3631NB	3631	1	2 PASS END COVER - EC34	5	GM
EC035-3632NB	3632	1	BLANK END COVER - EC35	4	GM
AN12NT	3297	2	'O' RING SEALS	3	NITRILE
785-5TN1A	785	1	TUBE STACK - EC160 - NORMAL FLOW	2	CN10
785-4TN1A	785	1	TUBE STACK - EC140 - NORMAL FLOW	2	CN10
785-3TN1A	785	1	TUBE STACK - EC120 - NORMAL FLOW	2	CN10
785-2TN1A	785	1	TUBE STACK - EC100 - NORMAL FLOW	2	CN10
785-1TN1A	785	1	TUBE STACK - EC80 - NORMAL FLOW	2	CN10
EC016-783-5AL	783-5	1	BODY - EC16 - NORMAL FLOW	1	AL
EC014-783-4AL	783-4	1	BODY - EC14 - NORMAL FLOW	1	AL
EC012-783-3AL	783-3	1	BODY - EC12 - NORMAL FLOW	1	AL
EC010-783-2AL	783-2	1	BODY - EC10 - NORMAL FLOW	1	AL
EC021-978AL	978	1	BODY - EC21 - NORMAL FLOW	1	AL

FOR REVISION HISTORY SEE CHART DRAWING '4004'



ALL DIMENSIONS ARE IN MILLIMETRES

**E.J.BOWMAN (BIRMINGHAM) LTD.**  
Chester Street Birmingham B6 4AP England  
Tel: +44(0) 121 359 5401 Fax: +44(0) 121 359 7495  
email: info@ejbowman.co.uk www.ejbowman.co.uk

DRAWN:	J. SWAIN	TITLE:	EC Range Of 2-Pass Coolers - Normal Flow	
DATE:	23/05/2013	DRG No:		3825
REDRAWN:				
DATE:				
CHECKED:				
SCALE:	2:1			