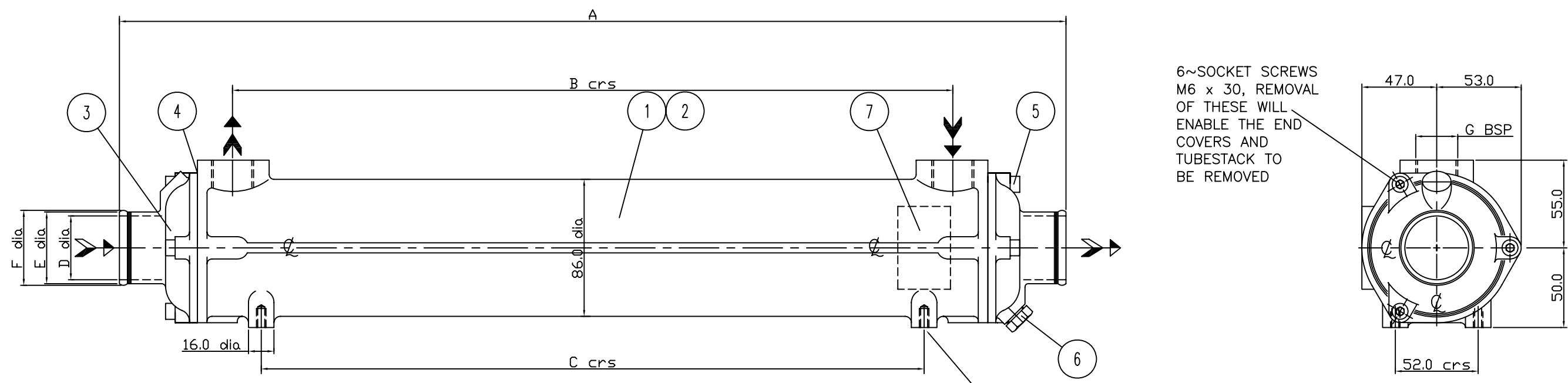


ISS No	MODIFICATION	DATE	SIGN
2	EC2 & EC29 END COVERS MATERIAL CHANGED TO GFN	17-12-99	S.M.
3	GFN END COVERS DELETED	16-1-02	S.M.



4~MOUNTING HOLES TAPPED M6 x 10 DEEP

↑ DIRECTION OF COLD FLOW
 ↑ DIRECTION OF HOT FLOW

BODY~ALUMINIUM LM6M
 TUBESTACK~CUPRO NICKEL 90/10
 END COVERS~NAVAL BRASS

 BODY~ALUMINIUM LM6M
 TUBESTACK~CUPRO NICKEL 90/10
 END COVERS~NAVAL BRASS

 BODY~ALUMINIUM LM6M
 TUBESTACK~COPPER
 END COVERS~ALUMINIUM LM6M

 BODY~ALUMINIUM LM6M
 TUBESTACK~COPPER
 END COVERS~ALUMINIUM LM6M

 BODY~ALUMINIUM LM6M
 TUBESTACK~CUPRO NICKEL 90/10
 END COVERS~NAVAL BRASS

 BODY~ALUMINIUM LM6M
 TUBESTACK~COPPER
 END COVERS~CAST IRON

 BODY~ALUMINIUM LM6M
 TUBESTACK~COPPER
 END COVERS~ALUMINIUM LM6M

 BODY~ALUMINIUM LM6M
 TUBESTACK~COPPER
 END COVERS~CAST IRON

 BODY~ALUMINIUM LM6M
 TUBESTACK~CUPRO NICKEL 90/10
 END COVERS~NAVAL BRASS

 BODY~ALUMINIUM LM6M
 TUBESTACK~CUPRO NICKEL 90/10
 END COVERS~GUN METAL

TYPE No.	A	B	C
EC80	196	60	60
EC100	282	140	104
EC120	368	226	190
EC140	466	324	288
EC160	594	452	416

NOTE ~ MAXIMUM TAPPING FOR EC80 UNIT IS 1/2" BSP

		890		1069		1635		1812		2028		2420		2584		3083		3198		3554			
	3594	1	NAMEPLATE	7	BRASS	3594	BRASS	3594	BRASS	3594	BRASS	3594	BRASS	3594	BRASS	3594	BRASS	3594	BRASS	3594	BRASS		
	915	1	DRAIN PLUG	6	BRASS	915	BRASS	915	BRASS	915	BRASS	915	BRASS	915	BRASS	915	BRASS	915	BRASS	915	BRASS		
	M6x30	6	SOCKET SCREWS	5	M S	M6x30	M S	M6x30	M S	M6x30	M S	M6x30	M S	M6x30	M S	M6x30	M S	M6x30	M S	M6x30	M S		
	AN12	2	SEALS	4	NITRILE	AN12	NITRILE	AN12	VITON	AN12	VITON	AN12	VITON	AN12	VITON	AN12	VITON	AN12	NITRILE	AN12	NITRILE		
EC2-2479 NB		2	END COVERS	3	NB	EC2-2479 NB		EC2-786 AL		EC2-786 AL		EC29-3234 NB		EC9-2421 CI		EC11-3666 AL		EC9-2421 CI		EC29-3234 NB		EC17-3553 GM	
785-5TN1A		1	T/STACK EC160	2	CN10	785-5TN1A		785-5TC2A		785-5TC2A		785-5TN1A		785-5TC2A		785-5TC2A		785-5TC2A		785-5TN1A		785-5TN1A	
785-4TN1A		1	T/STACK EC140	2	CN10	785-4TN1A		785-4TC2A		785-4TC2A		785-4TN1A		785-4TC2A		785-4TC2A		785-4TC2A		785-4TN1A		785-4TN1A	
785-3TN1A		1	T/STACK EC120	2	CN10	785-3TN1A		785-3TC2A		785-3TC2A		785-3TN1A		785-3TC2A		785-3TC2A		785-3TC2A		785-3TN1A		785-3TN1A	
785-2TN1A		1	T/STACK EC100	2	CN10	785-2TN1A		785-2TC2A		785-2TC2A		785-2TN1A		785-2TC2A		785-2TC2A		785-2TC2A		785-2TN1A		785-2TN1A	
		1	T/STACK EC80	2	CN10	785-1TN1A		785-1TC2A		785-1TC2A		785-1TN1A		785-1TC2A		785-1TC2A		785-1TC2A				785-1TN1A	
EC16	783-5	1	BODY EC160	1	LM6M	783-5	LM6M	783-5	LM6M	783-5	LM6M	783-5	LM6M	783-5	LM6M	783-5	LM6M	783-5	LM6M	783-5	LM6M	783-5	LM6M
EC14	783-4	1	BODY EC140	1	LM6M	783-4	LM6M	783-4	LM6M	783-4	LM6M	783-4	LM6M	783-4	LM6M	783-4	LM6M	783-4	LM6M	783-4	LM6M	783-4	LM6M
EC12	783-3	1	BODY EC120	1	LM6M	783-3	LM6M	783-3	LM6M	783-3	LM6M	783-3	LM6M	783-3	LM6M	783-3	LM6M	783-3	LM6M	783-3	LM6M	783-3	LM6M
EC10	783-2	1	BODY EC100	1	LM6M	783-2	LM6M	783-2	LM6M	783-2	LM6M	783-2	LM6M	783-2	LM6M	783-2	LM6M	783-2	LM6M	783-2	LM6M	783-2	LM6M
EC21		1	BODY EC80	1	LM6M	978	LM6M	978	LM6M	978	LM6M	978	LM6M	978	LM6M	978	LM6M	978	LM6M	978	LM6M	978	LM6M

ASSY No.	D	E	F	G
890	40	45	47	3/4" BSP
1069	40	45	47	1/2" BSP
1635	38	45	47	3/4" BSP
1812	38	45	47	3/8" BSP
2028	27	32	34	1/2" BSP
2420	45	52	54	3/4" BSP
2584	32	38	40	1/2" BSP
3083	45	52	54	1/2" BSP
3198	27	32	34	3/4" BSP
3554	20	26	28	1/2" BSP

ALL DIMENSIONS ARE IN MILLIMETRES

E.J. BOWMAN (BIRMINGHAM) LIMITED
 CHESTER STREET
 BIRMINGHAM B6 4AP

DRAWN: G. S. BRADLEY
 DATE: 15-5-85
 REDRAWN: MARVEN MOULD DESIGN
 DATE: 9-JUL-1999
 CHECKED:
 SCALE:

TITLE:
 EC RANGE OF
 HEAT EXCHANGERS

CHART NUMBER: 4002